
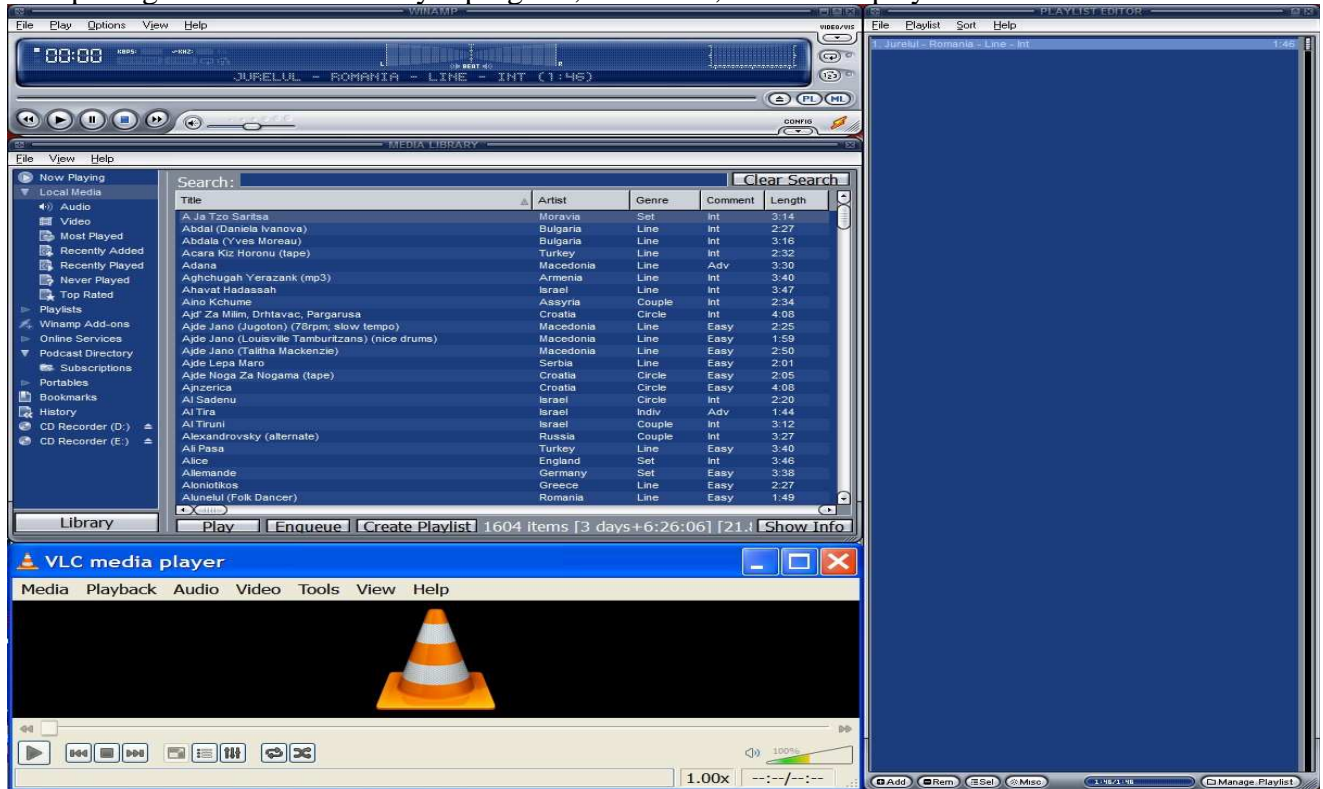


PROGRAM SETUP AND ADJUSTMENTS

- ❖ After booting up the computer, click on this icon (located on the desktop) to start Winamp:
- ❖ When Winamp starts, you should see the following screens: Winamp Folk Dancer (the Winamp player), Media Library and Playlist Editor (all shown below). The PaceMaker icon is displayed by opening the VLC Media Player program; otherwise, it is not displayed.



- ❖ There are a number of features that may be used by the programmer to facilitate their use of Winamp. They are as follows:
 - Delayed play – Allows programmer to walk out onto the floor to lead or do the dance.
 - Lock – Keeps program elements from “wandering”; locks out the unused “windowshade” mode; prevents the library and playlist windows from disappearing.
 - Playlist remaining indicator
 - Delay adjustment between tunes
 - Stop after play
 - Stop at end of a particular dance
 - Repeat
 - Play selected tune – Safest way to pick a dance from the playlist
- ❖ The most common situations requiring corrective action or adjustment of the screens are as follows:
 - If the **Media Library** or the **Playlist Editor** screens are not showing, click on the ML or PL button on the lower right of the Winamp Folk Dancer screen.
 - If there is insufficient or no sound from the notebook, make sure the Winamp Folk Dancer volume control is set to maximum.
 - To switch playlist operation between stopping after each tune or going to the next tune, click the button with an oval loop and an arrow above the PL and ML buttons.
 - To switch playlist operation between random shuffle and playing in numerical order, click the button with a black square above the PL and ML buttons.



<p>Verify the setting of the controls shown to the right</p>	 <p>Volume control set (otherwise, signal not be high)</p>	<p>Playlist advance/stop button (oval loop and an arrow), random shuffle/numerical order button (black square), Playlist button, Music Library button.</p>
---	---	---

- ❖ In the **media library**, the following columns are populated:
 - Title: Name of dance/song
 - Artist: Country/Ethnicity
 - Genre: Dance formation
 - Composer: Dance difficulty
 - Publisher: Dance formation
 - Comment: Dance difficulty
 - Album: Recording source
 - Length: Tune duration
 - Filename: Unique number
 - BPM: Tempo of tune

NOTE: Dance Formation and Dance Difficulty are stored in redundant fields because Winamp has difficulty in displaying Publisher and Composer data for FLAC-formatted files.

- ❖ To set up the music library and a playlist, do the following:
 - Refresh the music library to ensure that all tunes are available for playing.
 - To add a tune to the playlist, double-click it on the Media Library.
 - In the Playlist Editor, right-click on the tune and select "Play item(s)".
 - Click the play button in Winamp Folk Dancer.

In the fall of 2011, several codings were added to the music library to support new or developing programmers. These changes made it easy to quickly identify tunes that the group was familiar with and were likely to get people dancing. They also reduced the need for someone to be highly knowledgeable of the group's repertoire before they could program.

- **BPM** – Tempos were entered for swing dance tunes so that programmers could differentiate between slow (<130 BPM), moderate (130-170 BPM) and fast (>170 BPM) tempo tunes.
- **core** – A number of tunes are tagged as "core" in the 'Composer' field. These tunes are for dances that were/are very popular and/or well known in the group. This helps a programmer prepare a program when they are not personally familiar with some of the dances.
- **preferred** – Not all of the tunes for the same dance or dance type (e.g., Pravo, Zwiefache) are equally danceable or preferred by many of the dancers. Therefore, one or more of those tunes has "(preferred)" in the title. This helps a programmer prepare a program when they are not personally familiar with some of the tunes for a particular dance or dance type.
- **core2011** – Some of the "core" tunes are tagged as "core2011" in the 'Composer' field. These tunes are the (arbitrarily) preferred tunes for "core" dances to help a programmer prepare a program when they are not personally familiar with some of the dances or the tunes. A list of these tunes is shown at <http://www.aifd.cc/music/exports/html/core2011.html>. To display only these dances in the Media Library, type 'core2011' in the search field (as shown in the image below).



The programmer may click on the Title, Artist (nationality/ethnicity), Genre (formation) and Comment (difficulty) buttons to further sort the list of “core2011” dances.

VLC MEDIA PLAYER OPERATION

To play a tune at a different tempo, do the following:

- ❖ Right-click on the tune in the Winamp playlist and select “View file info”. The number is shown in the file name displayed at the top of the screen and is needed to locate the tune, as the music library file structure has sequential numbering.
- ❖ Click Windows-D to get to the desktop and double-click the VLC Media Player icon.
- ❖ To open the desired tune, click “Media” on the toolbar, then click “Open File” and navigate to the “AIFD FLAC Directory” folder (if it doesn’t display immediately).
- ❖ Set “Files of type” to “All Files” and locate the desired tune.
- ❖ Double-click the file name, then click “Playback” to adjust the tempo or jump forward or backward.

PROBLEM TROUBLESHOOTING

#	Problem	Diagnosis/Solution
1	Media Library screen and/or Playlist Editor screen is not displayed.	Diagnosis – Media Library and/or Playlist Editor has been turned off. Solution – click on the ML or PL button on the lower right of the Winamp Folk Dancer screen.
2	Insufficient or no sound from the notebook.	Diagnosis – Winamp Folk Dancer volume control has been turned down. Solution – Set the Winamp Folk Dancer volume control to maximum.
3	Winamp does not skip to the next selection in the playlist even if Toggle button is set (set <i>Starting Winamp</i> above).	Diagnosis – The Manual Playlist Advance checkbox is checked. Solution – Go to Playlist Editor > Playlist > Playlist Preferences and <u>uncheck</u> the Manual Playlist Advance checkbox in the "Advanced Playlist Settings" in the center of the screen.
4	Winamp tries to play a tune but almost immediately stops, displays blanks where the tune title was displayed and then skips to the next tune in the playlist.	Diagnosis #1 – Winamp is not pointing to the directory with the FLAC files on the C drive. Solution #1 – Clear the Media Library, then reload it from the FLAC directory. Diagnosis #2 – If a dance title is edited in any way in the FLAC directory, the corresponding item in a previously-created playlist won't play. Solution #2 – Re-enter the tune from the current media library when the tune in question goes "blank" in the Playlist Editor.
5	FLAC directory does not	Diagnosis – If a different view is selected in the View dropdown

appear in the Media Library (e.g., the Media Library displays a list of playlists rather than the contents of the music library)

box, the FLAC directory will not appear. This occurs if the “Manage Playlists” option under the “Manage Playlists” button displayed at the bottom of the Playlist Editor is selected. ***Never select this option!*** **Solution** – Slide the left edge of the Media Library to the right to display the menu behind the list of playlists, then select Local Media. Alternatively, if a toolbar is available, go to View > Local Media and reset it to Local Media.